

**MARINE STEWARDSHIP COUNCIL – TECHNICAL ADVISORY BOARD  
TAB DIRECTIVE SERIES**

<b>TAB Directive Number</b>	<b>Title</b>	<b>Date of Issue</b>
TAB D-022 v1.1	Consumer Ready Tamper Proof Definition and Decision Tree	1 May 2010
Decision Date: 15 January 2009 Effective Date: 12 February 2009		

**Documents Supplemented or Modified by this Directive**

<b>MSC Scheme Document</b>	<b>Status Change</b>
TAB Directive 022 v1	Superseded

**Background**

The scope of the Chain of Custody Certification Methodology version 6 states that “once an MSC certified fish or fish product is placed into *consumer ready tamper proof* packaging the requirement for COC certification ceases to apply.” An official definition of *consumer ready tamper proof* and a corresponding decision making procedure to determine whether a product can be considered *consumer ready tamper proof* however have not previously been provided.

This directive describes MSC's policy with regard to *consumer ready tamper proof* products and its implications in relation to the CB's COC certificate holders.

This directive is intended to be used by COC clients, Logo Licensees and Certification Bodies.

**Intent**

The intent of this Directive is to increase the use of the logo without jeopardizing the integrity of the Chain of Custody.

## Direction

### 1. Definition

Consumer ready tamper proof product	<p>Any single item for presentation as such to the ultimate consumer consisting of a foodstuff and the packaging into which it was put before being offered for sale, whether such packaging encloses the foodstuff completely or only partially, but in any case in such a way that the content cannot be altered without opening or irreversibly changing the packaging.</p> <p>In the case of using a tag or any other identifying mark, it must be applied by an MSC Chain of Custody company and must not be able to be replaced or re-used once it has been removed.</p>
-------------------------------------	--

### 2. Pre-condition

In all cases, the logo can only be applied by a Chain of Custody certificate holder, and the use of the label has to be covered by a valid logo license agreement and approved by MSCI before labelling.

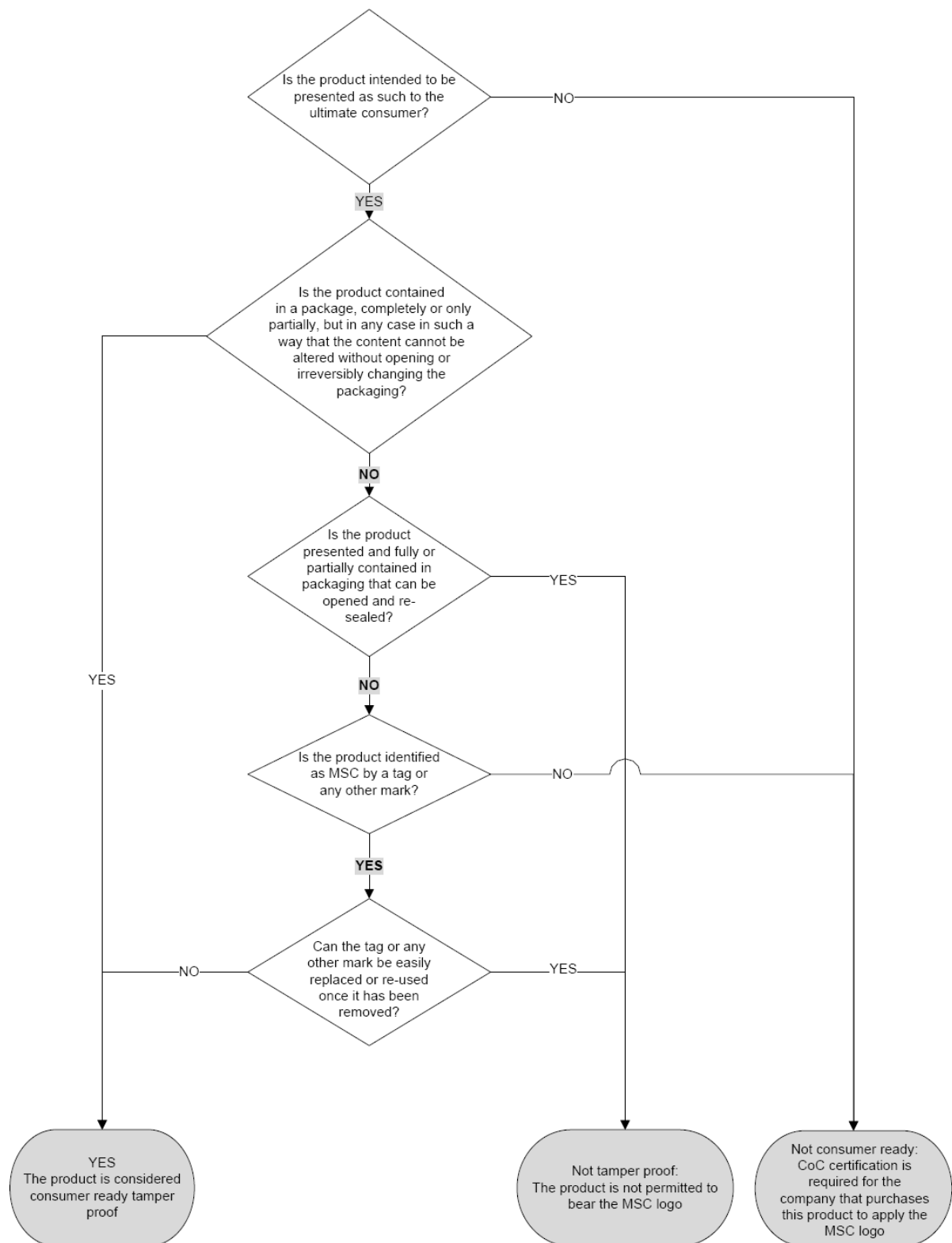
### 3. Specific direction for tags or any other identifying marks

Fish using tags or any other marks to identify a product as MSC must be displayed in a way that is consistent with the guidelines for the display of fish presented in consumer ready tamper proof packaging.

### 4. Decision tree

The following decision tree states whether a product can be considered *consumer ready tamper proof*, whether it is tamper proof, or whether COC is required at the next stage.

**Decision tree: Can this product be considered consumer ready tamper proof?**



**ENDS**